



Lindor *The gentle touch in mixing*

Lindor L100 Lab Mixer “Work Bench for Gentle Touch Mixing”

Lindor has designed a mixer for laboratory and small production use. With its useful volume of max. 100 liters for most products a batch of 10 – 60 kg can be mixed.

The key design features are focused on ease of use and flexibility:

- Fill and empty on one side
- Space for instrumentation and process add-ons on the other side
- Compact design: h x l x w = ~ 1.3 x 1.5 x 0.9 m
- Product contact parts made of AISI 316L, frame and cover AISI 304
- Integrated control system with touch screen, PLC and VFD
- Hygienic design for foodstuffs



Fill and discharge on one side

The mixer is filled by emptying bags in the funnel while the mixer is already rotating. After filling the drum will rotate at the selected rotation speed (2 – 9 RPM) for a pre-set mixing time. When this has elapsed, the drum will stop and the filling pipe will automatically move down. The mixer will now rotate to empty the drum completely.

With filling and emptying on one side of the mixing drum,

the other side is available for mounting instrumentation and process add-ons.

Measure and modify on the other side

Instrumentation and process add-ons can be placed at a blind flange on the mixing drum. The blind flange (FDA approved HDPE) can easily be modified and replaced for placing instrumentation and process add-ons.

Examples of instruments and process add-ons are:

- Temperature – PT100
- Humidity Sensor
- Camera
- Liquid injection
- Hot/cold air
- Micro dosing during mixing

Compact Design

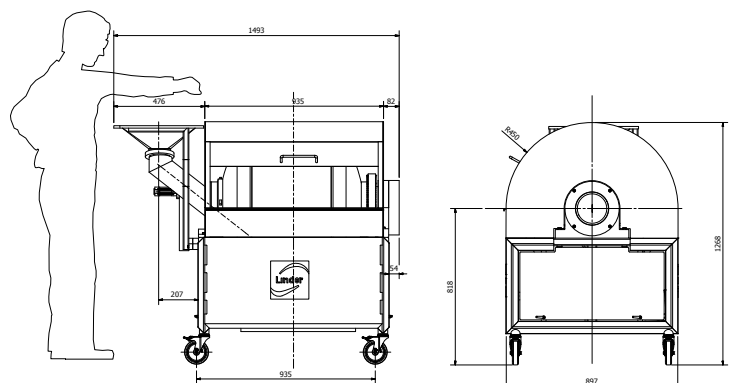
Main dimensions are: h x l x w = ~ 1.3 x 1.5 x 0.9 m with a large sliding door in the cover. Three hatches with single release mechanism for quick access to the drum. Easy moving around on stainless steel/rubber wheels.

Integrated control system

The mixer is equipped with an integrated control panel including Touch Screen Panel, PLC and VFD. The display will include functions for:

- Automatic mode: Timed filling – mixing - emptying at pre-set speed
- Manual mode
- Rotation speed, running hours, alarms
- Optional: exchange of data and remote control

The main switch is in the electrical cabinet under the frame, E-stop is under the display.



For more info you can contact:

Lindor Products B.V. - Tel: + 31 78 655 0 655 - mixers@lindor.nl - www.lindor.nl